

RAILWAY HOUSE  
2 REMPSTONE ROAD  
SWANAGE  
DORSET  
BH19 1DW  
*Opposite the Steam Railway Station*



Tel: 01929 423333  
(24 hours)  
Web: [www.milesandson.co.uk](http://www.milesandson.co.uk)  
Email: [property@milesandson.co.uk](mailto:property@milesandson.co.uk)



## **Rempstone Road, Swanage, Dorset BH19 1DR**

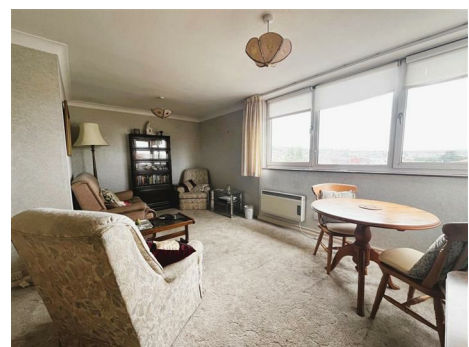
Purpose-built top (4th floor) town centre flat with an open westerly aspect and views over the town to the hills beyond. Lift serves the block. 2 bedrooms, 1 reception room, kitchen, bathroom/W.C., residents unallocated parking spaces. No forward chain.

- Purpose-built top (4th floor flat)
- 1 reception room
- Electric heating. Double glazing
- Being sold with no forward chain
- Lift serves the block
- Kitchen
- Open westerly aspect with views over the town to the hills beyond
- 2 bedrooms
- Bathroom/W.C.
- Residents unallocated off-road parking space

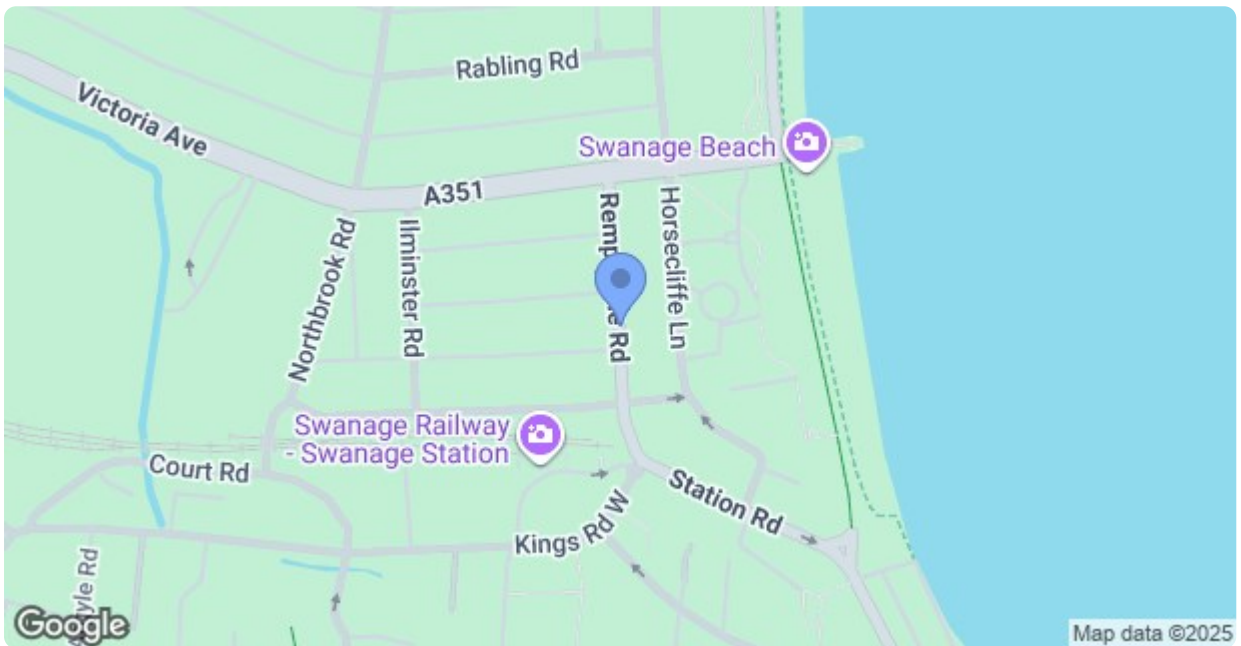
**Asking Price £295,000**

# Rempstone Road, Swanage, Dorset BH19 1DR

\* Awaiting full particulars \*







Energy Efficiency Rating		
	Current	Potential
<i>Very energy efficient - lower running costs</i>		
(92 plus) <b>A</b>		
(81-91) <b>B</b>		
(69-80) <b>C</b>		
(55-68) <b>D</b>		
(39-54) <b>E</b>		
(21-38) <b>F</b>		
(1-20) <b>G</b>		
<i>Not energy efficient - higher running costs</i>		
<b>England &amp; Wales</b>	EU Directive 2002/91/EC	